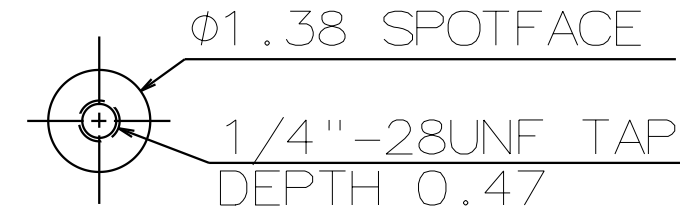
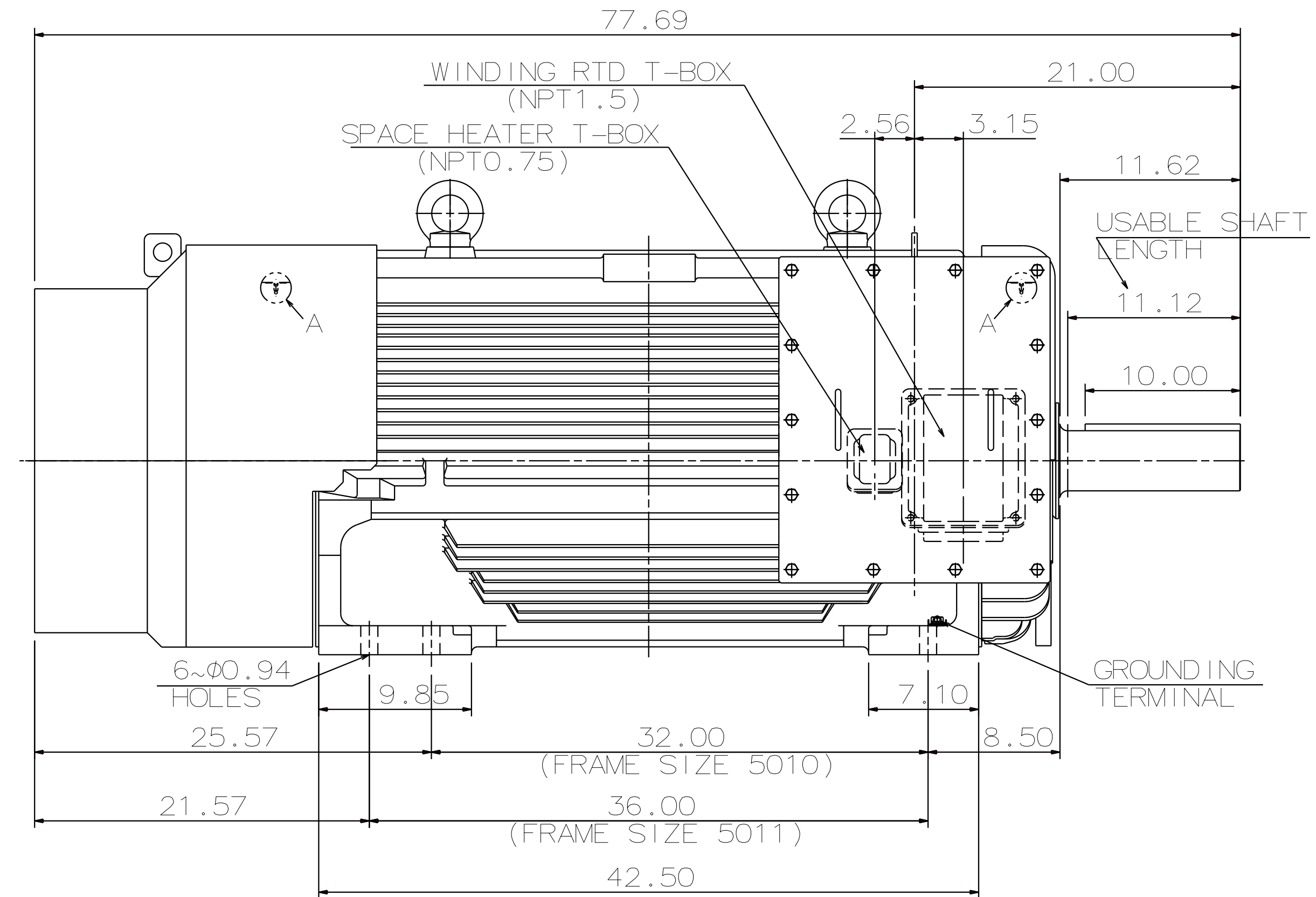
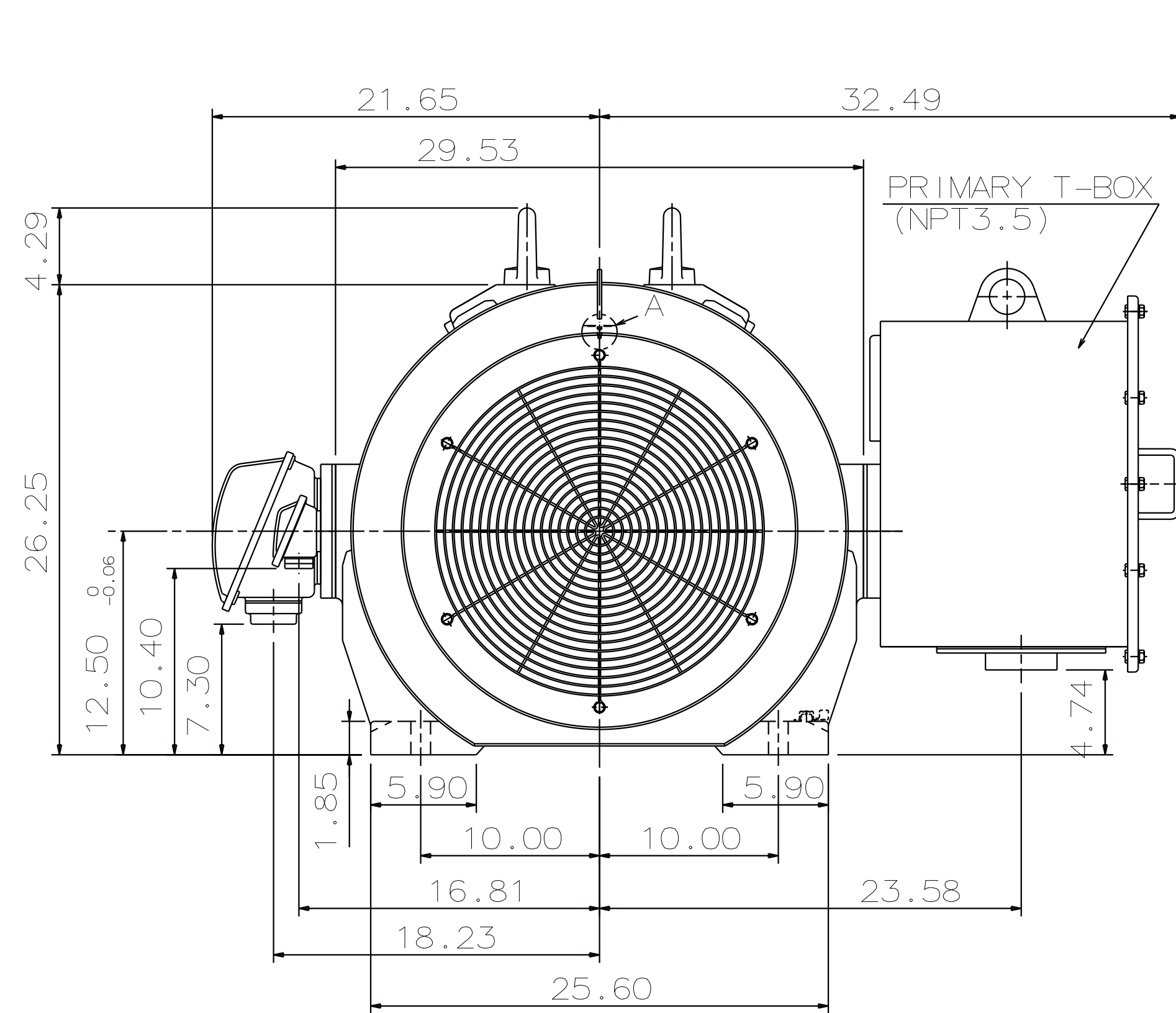


CATALOG #	TYPE	FRAME	OUTPUT		POLE	SYN. SPEED R.P.M.	VOLTAGE V.	Hz.	TIME RATING	INSULATION CLASS	SERVICE FACTOR	BEARINGS		WEIGHT LBS
			HP	KW								DE	NDE	
KD4004	AEHAGD	5011B	400	298	4	1800	2300/4000	60	CONT.	F	1.15	6324	6320	4490

TOTALLY ENCLOSED FAN-COOLED TYPE. SQUIRREL CAGE MOTOR

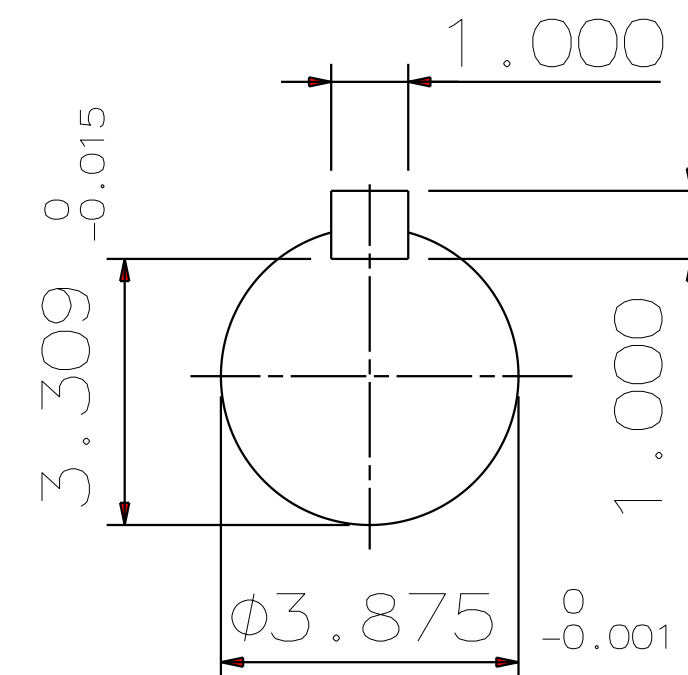


DETAIL A
(PROVISION FOR VIBRATION SENSOR)



NOTES:

1. DIMENSIONS IN INCH.
2. ENCLOSURE: IP55.
3. FOR DIRECT FLEXIBLE COUPLING.
4. WITH WINDING RTD: PT 100Ω/0°C 6PCS
5. WITH SPACE HEATER: SINGLE PHASE, 120V
6. PROVISION FOR BEARING RTD & VIBRATION SENSOR MOUNTING: 2~PT 1/2" TAPS PER BRACKET
7. NON-SPARKING FAN
8. CORROSION PROOF



REF: 4B040L391	REV. DATA			
	TECO Westinghouse		REV NO	01
	3-PHASE INDUCTION MOTOR OUTLINE DIMENSIONS		DWG NO.	0L_KD4004
	DWN E. NARVAEZ	111918	APPD S. GROHOSKY	111918
TECO-WESTINGHOUSE MOTOR COMPANY		ROUND ROCK, TEXAS USA		